

Queensland Living with COVID Pathways Update

*Managing COVID-19 positive patients in the community- the
role of General Practice in Queensland*

Anthony Elliott- General Manager Primary Health, Brisbane South PHN



Queensland Primary Health Networks

Prevention is better than cure! Get vaccinated.

The new living-with-COVID model of care will not come into effect until directed by Queensland's Chief Health Officer.

- While the borders opened on Monday, patients with COVID-19 will continue to be cared for by Queensland Health through the hospital system until further notice.
- This process will remain in place until the Chief Health Officer provides public health directions to move care of COVID-19 positive patients from the existing system into a shared pathway with primary care.



Queensland Primary Health Networks

Queensland PHNs are working jointly with Queensland Health and Health Consumers Queensland

The model of care has been developed with PHNs, and up-to-date information will be available on a single state-wide PHN Webpage including:

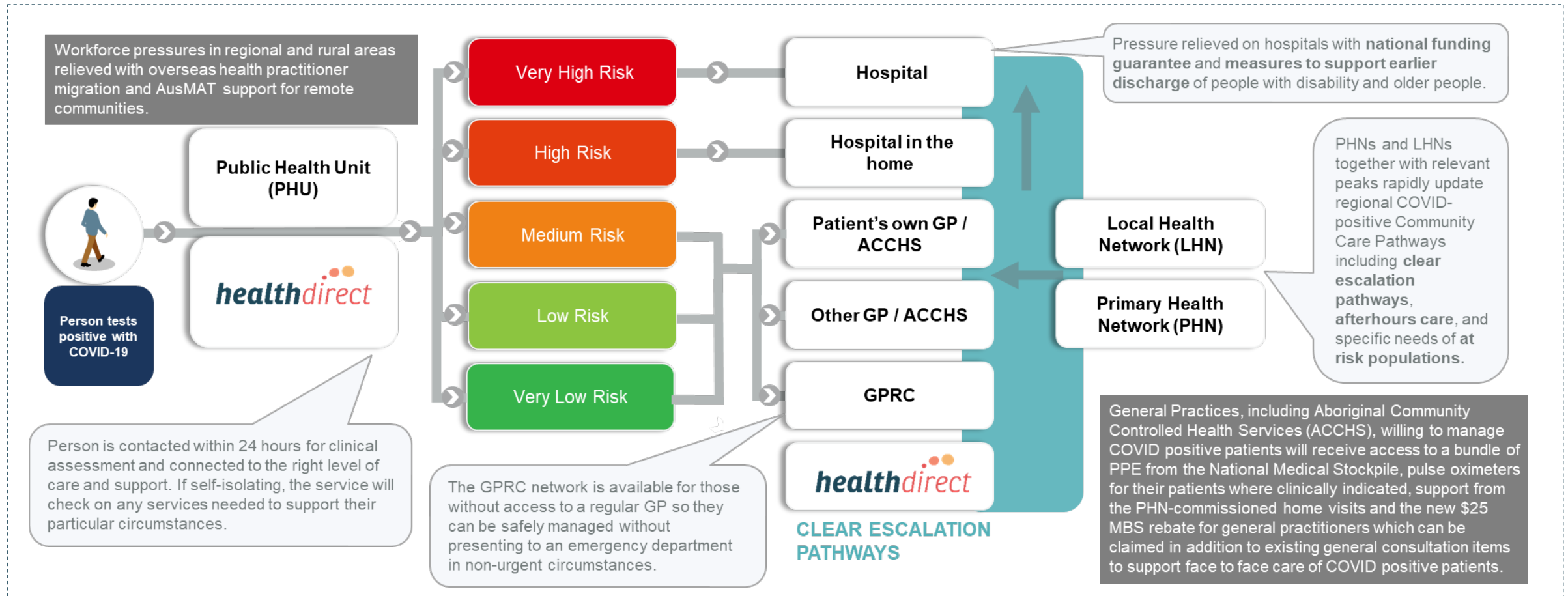
- State-wide and localised HealthPathways for COVID-19 care in the community.
 - Embed National and RACGP COVID-19 Management Guidelines for GPs (17 November 21)- treatment of COVID positive patients with moderate symptoms and to support care for COVID-19 positive people at home.
- Orientation information and FAQ's for general practices
- Patient resources and information packs for general practices to share with their patients
- How to access PPE from the National Medical Stockpile



COVID-positive Pathways: Supporting and Strengthening Primary Care

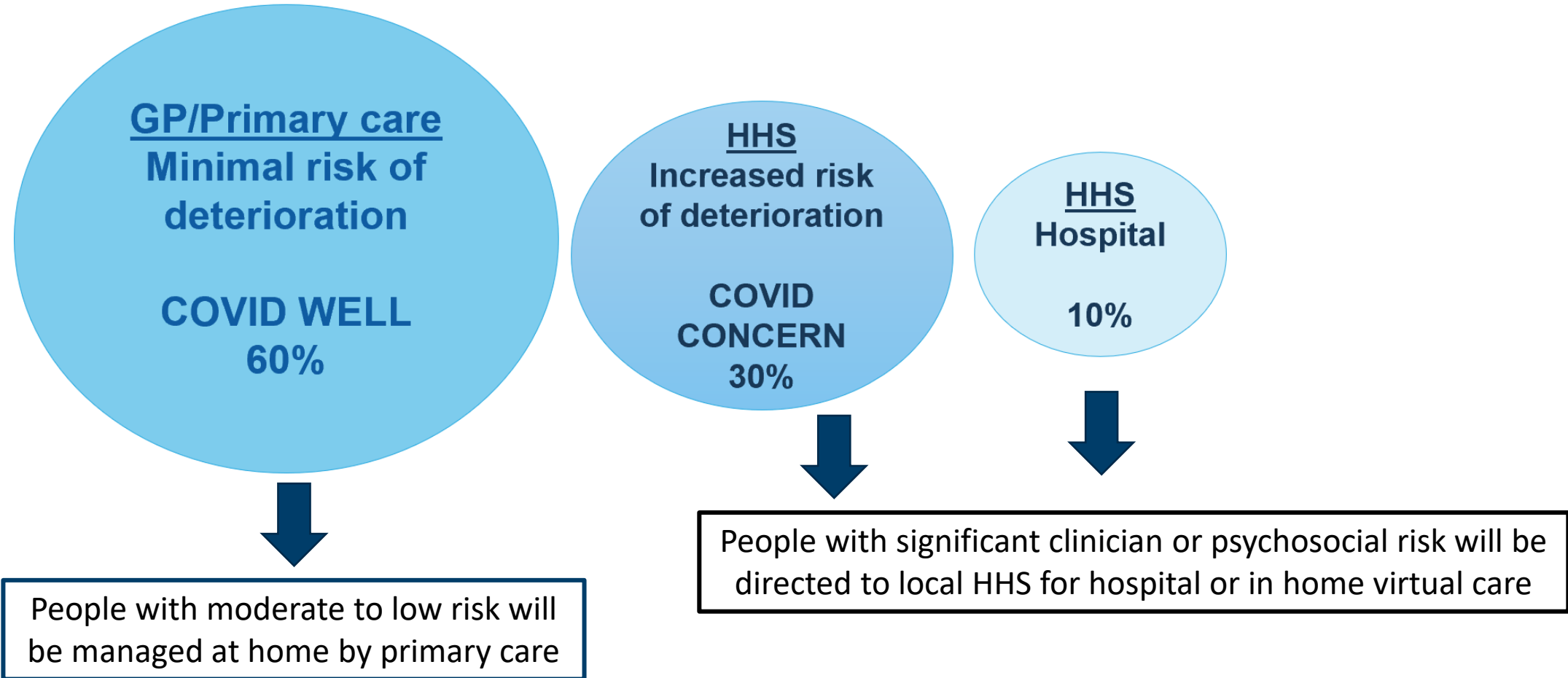
Living with COVID measures will **support GPs to be confident and equipped in managing their COVID positive patients** in the community, where clinically appropriate, whilst ensuring their and their team's safety.

Practices willing to manage COVID positive patients will **receive access to a bundle of PPE** from the National Medical Stockpile, **pulse oximeters** for their patients where clinically indicated, **support from the PHN-commissioned home visits** and access to the **new \$25 MBS rebate** for GPs, which can be claimed in addition to existing general consultation items to support face to face care of COVID positive patients. **Telehealth will also be available** for remote care.



Reminder of the cohorts

Assessment for risk of deterioration



General Practice care for COVID positive people

- Low-risk COVID patients will be referred to their usual GP for care
- Low risk COVID patients without a usual GP will be referred to a commonwealth funded General Practice Respiratory Clinic, or General Practice that has agreed to accept new COVID positive patients.
- If no GP service is available, the patient will be referred to the local HHS for virtual care at home

PHNs will maintain information about those general practices and general practitioners:

- Who will take on new low-moderate risk COVID positive patients in the community (patients that are not their usual patients)
- Who will see patients with respiratory or COVID-19 symptoms face-to-face in their practices



Primary care for COVID positive people

- GP, Mental health, and counselling care at home will be delivered by telehealth.
- PHNs are commissioning home visit care for those patients who need it:
 - Primary Care for COVID positive patients not related to COVID deterioration. Examples include wound dressing or removing stitches.
- Medicare items for care are in effect for general practice. Usual fees for care apply (i.e. no change- if your GP usually charges a gap fee for services)
- Social care access for COVID positive patients and households is noted as a priority, and pathways are being developed and investigated





phn
QUEENSLAND PHNs

An Australian Government Initiative

